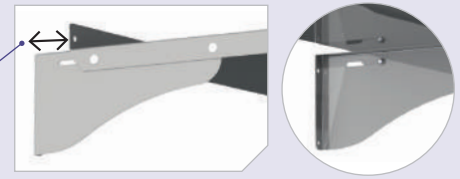


Solid wall shelves on brackets

- Supplied with 2 separate brackets - To be fixed to the wall with rawplugs
- 3 brackets from 1800 mm long
- Maximum load distributed : 50 kg

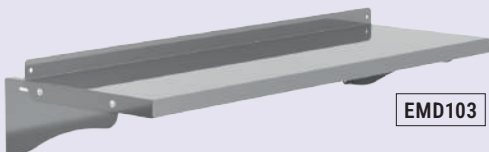


Practical: possibility to offset the shelf from the wall - **Wall offset adjustable** from 0 to 50 mm
Ideal for passage of piping



Shelves with straight edges

- Shelf: stainless steel sheet with rear backslash 35 mm high



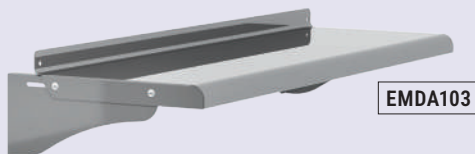
► **CUSTOMIZED** / Different lengths, +15 % of the price of the standard upper length (max. 2500 for straight edges, 2200 for rounded edges)

Length mm	WIDTH 300		WIDTH 400	
	Kg	Ref.	Kg	Ref.
1000	6	EMD103	8	EMD104
1200	7.2	EMD123	9.6	EMD124
1400	8.4	EMD143	11.2	EMD144
1500	9	EMD153	12	EMD154
1600	9.6	EMD163	12.8	EMD164
1800	10.8	EMD183	14.4	EMD184
1900	11.4	EMD193	15.2	EMD194
2000	12	EMD203	16	EMD204
2200	14.2	EMD223	17.6	EMD224
2400	16.4	EMD243	19.2	EMD244

Shipping within 48h

Shelves with welded rounded edges

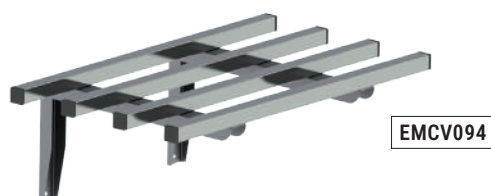
- Curve at the base (R10) and front curve 20 mm - Welded corners
- AISI 304L stainless steel



Length mm	WIDTH 300		WIDTH 400	
	Kg	Ref.	Kg	Ref.
1000	7	EMDA103	10	EMDA104
1200	8	EMDA123	11	EMDA124
1400	9	EMDA143	12	EMDA144
1500	10	EMDA153	12.5	EMDA154
1600	10.5	EMDA163	13	EMDA164
1800	12	EMDA183	15	EMDA184
1900	12.5	EMDA193	16	EMDA194
2000	13	EMDA203	16.5	EMDA204

Wall-mounted shelf racks

- Supplied with brackets and 4 dismantled cross pieces made of 25 x 25 mm square tubes in AISI 304 L stainless steel
- 3 brackets from 1800 mm long
- Maximum load distributed : 50 kg

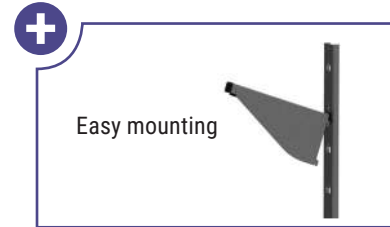


► **CUSTOMIZED** / Different lengths, +15 % of the price of the standard upper length (max. 2500 mm)

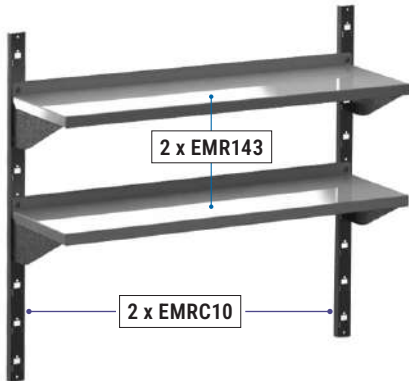
Length mm	WIDTH 400	
	Kg	Ref.
700	3.5	EMCV074
800	4	EMCV084
900	5	EMCV094
1200	6	EMCV124
1400	7	EMCV144
1500	7.5	EMCV154
1600	8	EMCV164
1800	10	EMCV184
2000	11	EMCV204
2100	11.6	EMCV214
2400	13.3	EMCV244

Wall-mounted shelves on racks

- Maximum load distributed per shelf: 50 kg
- Rack: 980 mm high with 9 possible adjustment levels - 5 shelves max.
- Forecast 2 racks up to 1600 mm long and 3 racks beyond




Shelves on racks with straight edges



- Shelf: in stainless steel sheet
- With rear backsplash 36 mm high
- **To buy with 2 or 3 EMRC10**

► **CUSTOMIZED** / Different lengths, +15 % of the price of the standard upper length (max. 2500 mm)

Length (rack included) mm	Length (shelf only) mm	WIDTH 300		WIDTH 400		Number of racks ref. EMRC10 to forecast	RACKS
		Kg	Ref.	Kg	Ref.		Ref.
1011	1000	5	EMR103	6	EMR104	2	EMRC10
1211	1200	5	EMR123	6	EMR124	2	 H 980 mm 1 kg
1411	1400	6	EMR143	7	EMR144	2	
1511	1500	6	EMR153	7	EMR154	2	
1611	1600	6	EMR163	8	EMR164	2	
1811	1800	8	EMR183	9	EMR184	3	
1911	1900	10	EMR193	11	EMR194	3	
2411	2400	10.6	EMR243	12	EMR244	3	


 Shipping within 48h

Shelves on racks with rounded edges



- Shelf with rounded edges in AISI 304L stainless steel
- With rear backsplash 36 mm high
- Curve at the base (R10) and front curve 20 mm
- **To buy with 2 or 3 EMRC10**

► **CUSTOMIZED** / Different lengths, +15 % of the price of the standard upper length (max. 2200 mm)

Length (rack included) mm	Length (shelf only) mm	WIDTH 300		WIDTH 400		Number of racks ref. EMRC10 to forecast	RACKS
		Kg	Ref.	Kg	Ref.		Ref.
1011	1000	5	EMRA103	6	EMRA104	2	EMRC10
1211	1200	5	EMRA123	6	EMRA124	2	 H 980 mm 1 kg
1411	1400	6	EMRA143	7	EMRA144	2	
1511	1500	6.5	EMRA153	7.5	EMRA154	2	
1611	1600	7	EMRA163	8	EMRA164	2	
1811	1800	8	EMRA183	9	EMRA184	3	
1911	1900	9	EMRA193	10	EMRA194	3	
2011	2000	9	EMRA203	10	EMRA204	3	

Wall shelves for food trays

- AISI 304L stainless steel sheet thickness 1.5 mm
- 2 fold dropped edges + rear backsplash 35 mm
- 15° sloping shelf
- Delivered with removable container supports , allowing the laying of different sizes of gastronorm containers (from GN1/1 to GN 1/9)
- Maximum depth of trays: 150 mm - Trays not supplied



EMG1



EMG1 with 4 gastro trays GN1/4



EMG1 with 2 trays GN1/3 and 2 trays GN1/6

Designation	External dimensions mm	Kg	Ref.
For 3 trays GN 1/3	560 x 370	2.4	EMG1
For 6 trays GN 1/3	1088 x 370	3.8	EMG2



DIMENSIONS OF GASTRONORM CONTAINERS:

- ▶ GN1/1 : 530 x 325 mm
- ▶ GN2/3 : 354 x 325 mm
- ▶ GN1/2 : 325 x 265 mm
- ▶ GN1/3 : 325 x 176 mm
- ▶ GN1/4 : 265 x 162 mm
- ▶ GN1/6 : 176 x 162 mm
- ▶ GN1/9 : 108 x 176 mm
- ▶ GN2/4 : 162 x 530 mm

(gastro trays sold on page 200)

